

1850

High Reach Loader



1850

High Reach Loader



Improved traction and easier to operate!

The known Performance and Reliability of the John Deere 1850 Loader has been enhanced with a New Transmission System that provides 8% higher torque and traction.

The system includes a Transaxle with two speed ranges that can be selected with the unit stopped and a 2-speed Hydrostatic Motor that enables the operator to “Shift on the Go”.

As on the previous units a clutch is not required to change gears or direction and the operator can vary the speed infinitely in each range by simply pressing the pedal forward or reverse.

An additional feature of this new transmission system makes things even easier for the operator. From a stationary position the 1850 will always start moving with the hydrostatic motor at its maximum displacement to give the unit maximum torque. If the motor high speed was selected, once the Loader advances and the tractive effort diminishes it will **Shift Automatically** to minimum displacement for more speed. When higher traction is needed it will shift back automatically to maximum displacement.



Engine

Powerful, reliable and low fuel consumption
John Deere 4045T, 105 HP (78Kw @ 2300 RPM)
Equipped with 3 stage air cleaning system
Precleaner, primary filter and safety element
Air cleaner service indicator
Fuel filter with water separator

Transmission System – Machine Travel

Hydrostatic system with a variable displacement pump and a 2-speed motor driving a 2-speed transaxle; the system provides infinitely variable speed in all of the ranges with dynamic braking of hydrostatic drive
Maximum speed of 29 KPH (18 MPH)

Axles and Tires

Outboard planetary final drive – both axles
Rear axle – oscillating and steering
2-speed transaxle in the front
23.1 x 26 size tires

Emergency and Parking Brake

Mechanical spring applied/hydraulic release wet disk brake mounted in front axle

Hydraulic System – Loading Functions

Double gear pump, making the swing, flex and pile functions independent from grab and tilt
Three Hydraulic Filters to improve filtration and increase hydraulic components life
Improved grab hoses routing to avoid premature hose failures
Adjustable port relief valves on all directional control valves lines
Heavy duty cylinders
Rear wheel hydrostatic power steering with priority oil supply

Boom and Piler

The articulated boom enables the operator to put the grab inside the highway trailer for better loading and packing
Strong construction boom and grab
Grab design with built-in hydraulic cylinders guards
Push type piler
Adjustable floating shoe on piler for cleaner cane

Electrical System

120 amp alternator
12 volt direct electric starting

Comfort and Security

Standard four post canopy
Standard backup alarm
Horn and work lights

Maintenance

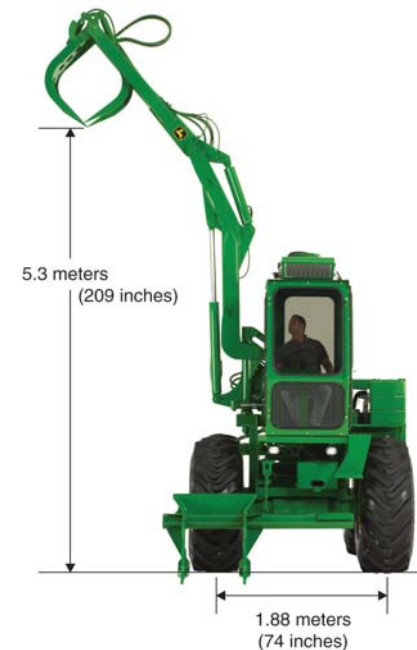
Easy access to all service items
All pins are chrome plated and hardened
Remote grease lines for hard to reach boom articulations

Optional Equipment

Cab with air conditioning
Engine oil and water warning system
Safety and signal lights

Tanks Capacities

Fuel	170 L (45 gal.)
Hydraulic oil	284 L (75 gal.)



Specifications throughout this brochure are subject to change without notification. Some photos may contain optional equipment. This product or some of the options may not be available in some markets due to legal restrictions. - Revised Nov/10

244 Hwy 3266 - Thibodaux - LA - 70301 - USA
Phone: (985) 447-7285
www.JohnDeere.com